



SE - Sweden

HANSEGRAND KLIMABAUSTOFFE



HANSEGRAND Path Cover

blend harmoniously into the natural environment, are inexpensive to install and easy to maintain in subsequent years.

THE BENEFITS AT A GLANCE



WATER-PERMEABLE

The small fine parts of HanseGrand Mix the Path Cover will provide intelligent water management and good ground breathing.

CLIMATE-FRIENDLY

The path covers are made of pure natural materials and are nearly dust-free, shear-resistant and easy to install.



DURABLE

The path covers are weatherproof and can be loosened and re-smoothed again and again. Though easy to maintain.



KLIMABAUSTOFFE

From cycle paths, footpaths and square construction to agriculture. The areas of application are diverse. Whether for large projects or smaller projects: Here you will find the right climate control materials for every application.

APPLICATIONS

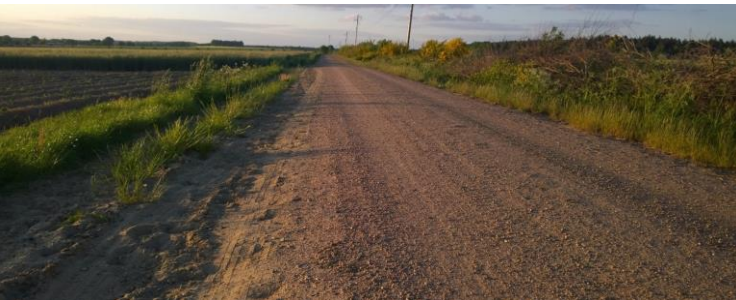


PATHS AND PLACES

Paths and places should be as dust- and smear-free as possible and still not sealed. The water-bound path coverings from HanseGrand achieve this over a long period of time, with Stabilizer additive also with very strong load. Their appearance looks familiar because the pure natural building materials they are made of come from the respective region.

CYCLE PATHS

New construction and renovation of cycle paths should be cost-effective, blend harmoniously into the landscape and remain free of root fractures and puddles. Numerous cycle path projects have shown that water-bound path coverings made of HanseGrand plus Stabilizer meet these requirements and last for many years with very little maintenance. The open-pored path covers made of high-quality natural building materials are an ideal environment for tree roots that can grow without breaking the paths. Due to the low proportion of fine particles, the cycle paths are not greasy when wet and are almost dust-free when hot.



RURAL WAYS

Ways in rural areas without puddles and dust? With water-bound path covers from HanseGrand this becomes reality. The construction with HG-Mix® on heavily used paths and banquets reduces the generation of dust and allows large quantities of water to seep away quickly. HG-Mix® is a top layer with high shear strength. It remains reversible and never sets completely.

EXPANDED CLAY

The application possibilities for HansePor expanded clay are versatile. In the house and in the garden, it creates an ideal basis for greening, because the small, brown globules really get the growth of the plants rolling. Whether as an aggregate for concrete or in earth and foundation construction: Expanded clay not only manages the water optimally, the beads are also light as a feather and reduce the lateral pressure and weight in gigantic buildings as well as in tiny small ones. When renovating old buildings, Blähton does an excellent job in thermal insulation and sound insulation.



ABOUT HANSEGRAND



”

The people at HanseGrand develop and combine building materials into systems that enable effective and natural solutions for the climatic challenges of our time.”

Hans Pape, Owner

Your partner in Sweden

BIOSAND

Blomstervænget 9
6230 Rødekro

mail(@)biosand.dk
<http://biosand.dk>

Kontaktperson: Jakob Fogged



HANSEGRAND®
KLIMABAUSTOFFE